

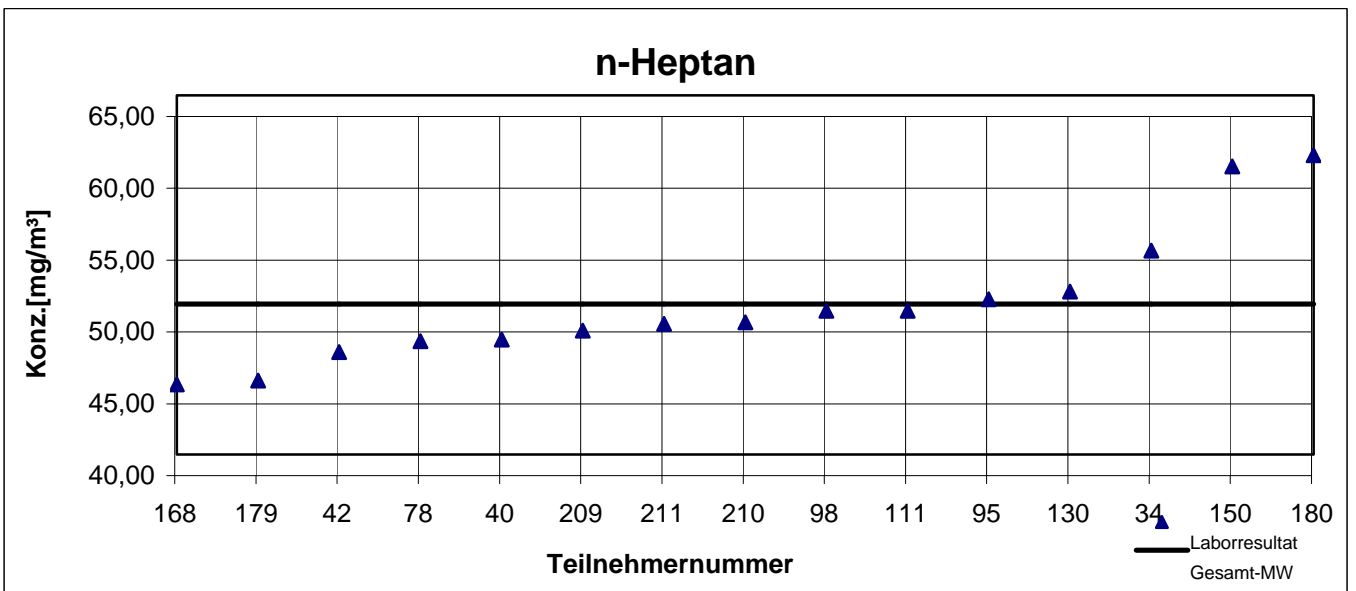
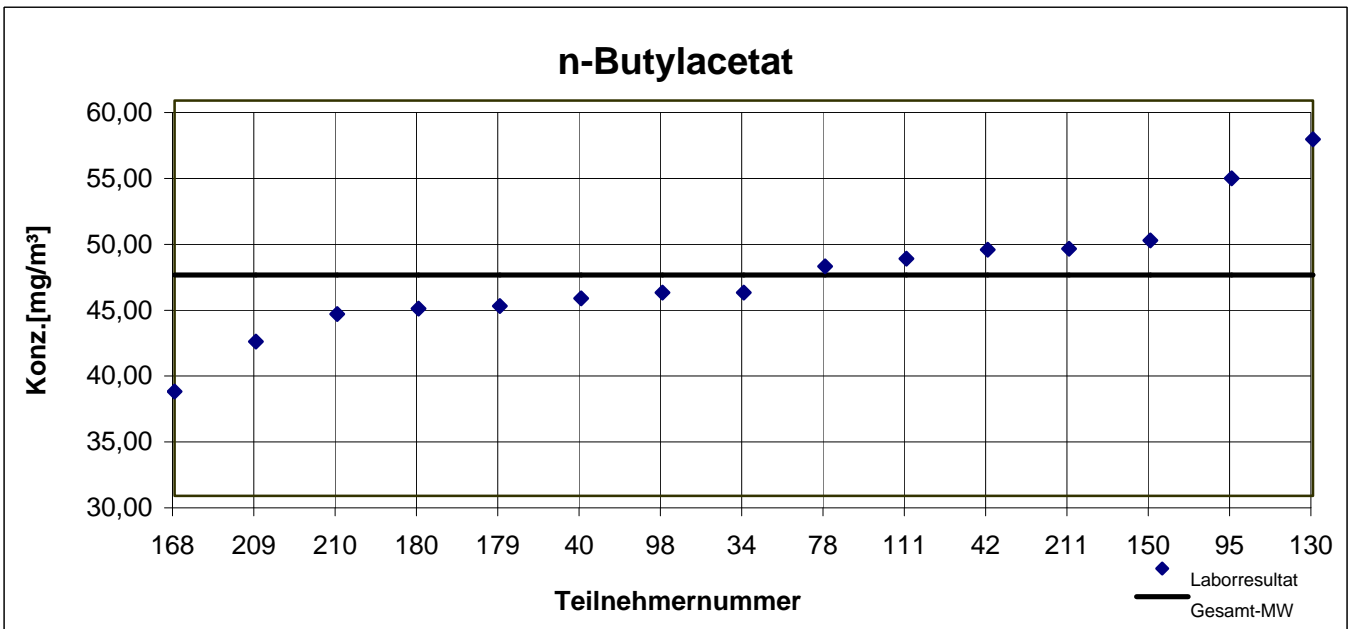
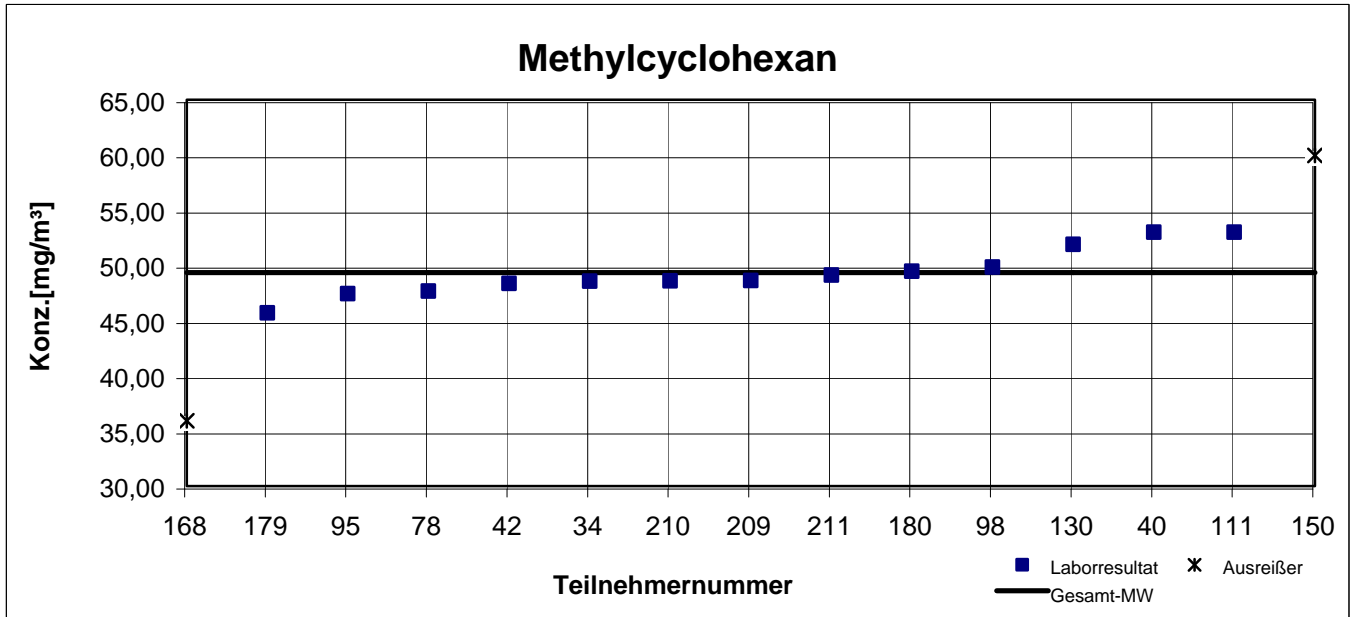
## Gesamtauswertung Probe 1

| Teilnehmer-<br>nummer | Methylcyclohexan                           |            | n-Butylacetat                              |            | n-Heptan                                   |            | o-Xylol                                    |            | Toluol                                     |            |
|-----------------------|--|------------|--|------------|--|------------|--|------------|--|------------|
|                       | Labor-<br>resultat<br>[mg/m <sup>3</sup> ] | z  - score | Labor-<br>resultat<br>[mg/m <sup>3</sup> ] | z  - score | Labor-<br>resultat<br>[mg/m <sup>3</sup> ] | z  - score | Labor-<br>resultat<br>[mg/m <sup>3</sup> ] | z  - score | Labor-<br>resultat<br>[mg/m <sup>3</sup> ] | z  - score |
| 34                    | 48,57                                      | 0,4        | 45,43                                      | 0,3        | 54,20                                      | 0,8        | 91,10                                      | 0,5        | 17,70                                      | 0,4        |
| 40                    | 53,00                                      | 1,7        | 45,00                                      | 0,4        | 48,00                                      | 0,5        | 86,00                                      | 0,1        | 19,50                                      | 0,6        |
| 42                    | 48,36                                      | 0,4        | 48,68                                      | 0,4        | 47,14                                      | 0,7        | 88,89                                      | 0,2        | 18,73                                      | 0,2        |
| 78                    | 47,66                                      | 0,8        | 47,42                                      | 0,1        | 47,89                                      | 0,6        | 88,19                                      | 0,2        | 18,40                                      | 0,0        |
| 95                    | 47,43                                      | 0,9        | 54,09                                      | 1,6        | 50,81                                      | 0,1        | 96,09                                      | 1,1        | 19,33                                      | 0,5        |
| 98                    | 49,84                                      | 0,2        | 45,41                                      | 0,3        | 50,00                                      | 0,1        | 81,27                                      | 0,6        | 18,72                                      | 0,2        |
| 111                   | 53,00                                      | 1,7        | 48,00                                      | 0,3        | 50,00                                      | 0,1        | 69,00                                      | 2,0        | 17,00                                      | 0,8        |
| 130                   | 51,90                                      | 1,2        | 57,07                                      | 2,2        | 51,33                                      | 0,2        | 91,60                                      | 0,6        | 19,03                                      | 0,3        |
| 150                   | 59,95                                      | 4,9        | 49,37                                      | 0,6        | 60,05                                      | 2,1        | 88,86                                      | 0,2        | 19,62                                      | 0,7        |
| 168                   | 35,92                                      | 6,2        | 37,92                                      | 1,9        | 44,89                                      | 1,2        | 76,30                                      | 1,2        | 14,56                                      | 2,3        |
| 179                   | 45,70                                      | 1,7        | 44,40                                      | 0,5        | 45,15                                      | 1,1        | 85,25                                      | 0,2        | 17,50                                      | 0,6        |
| 180                   | 49,47                                      | 0,1        | 44,20                                      | 0,5        | 60,83                                      | 2,2        | 104,87                                     | 2,1        | 22,70                                      | 2,5        |
| 209                   | 48,63                                      | 0,3        | 41,72                                      | 1,1        | 48,63                                      | 0,4        | 76,40                                      | 1,2        | 17,54                                      | 0,5        |
| 210                   | 48,60                                      | 0,3        | 43,80                                      | 0,6        | 49,20                                      | 0,3        | 85,10                                      | 0,2        | 18,10                                      | 0,2        |
| 211                   | 49,10                                      | 0,1        | 48,76                                      | 0,4        | 49,08                                      | 0,3        | 92,15                                      | 0,6        | 18,44                                      | 0,0        |

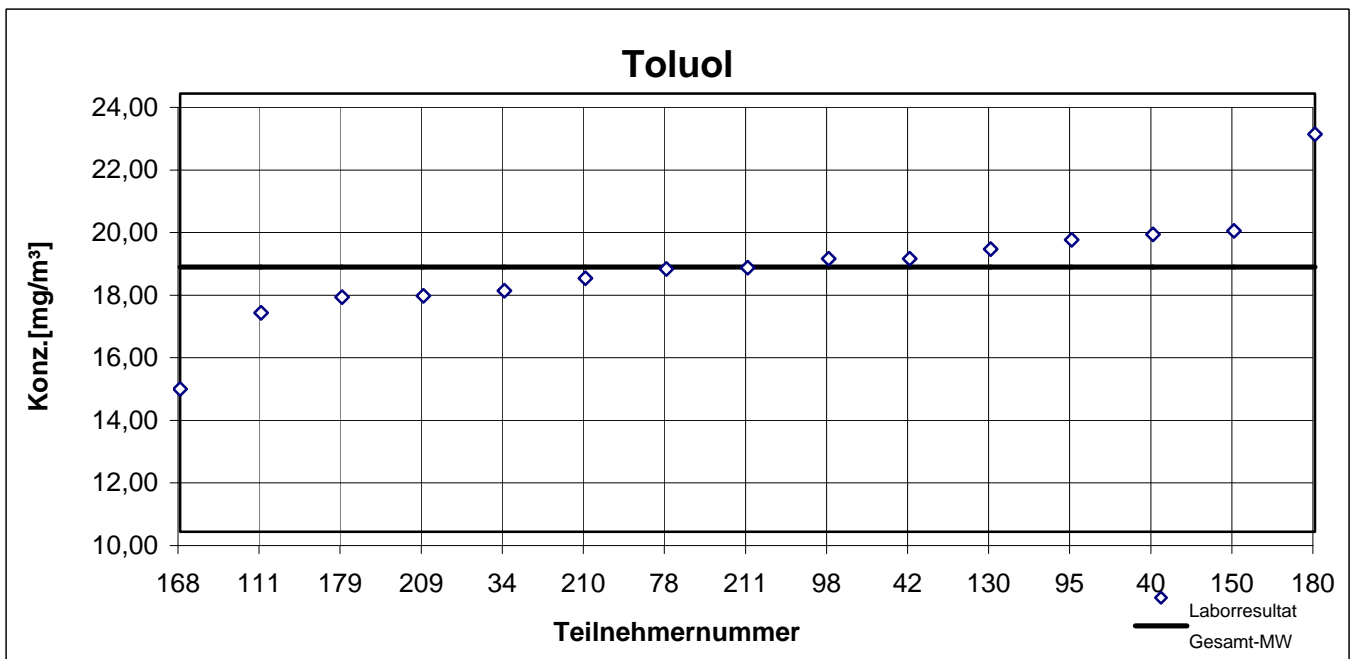
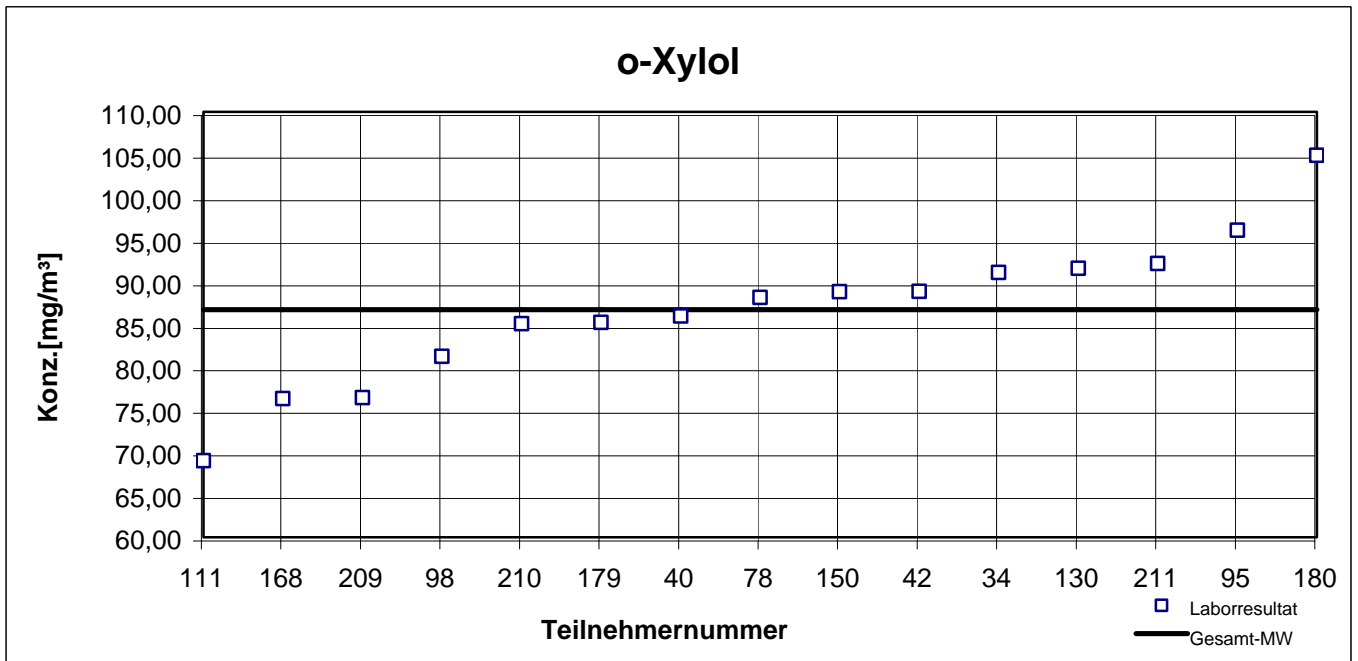
Die mit  gekennzeichneten Felder sind Ausreißer!

|  | Methyl-<br>cyclohexan | n-Butyl-<br>acetat | n-Heptan | o-Xylol | Toluol |
|--|-----------------------|--------------------|----------|---------|--------|
| Gesamtmittelwert $c_k$<br>[mg / m <sup>3</sup> ] | 49,33                 | 46,75              | 50,48    | 86,74   | 18,46  |
| Standardabweichung $S_k$<br>[mg/m <sup>3</sup> ] | 2,160                 | 4,688              | 4,664    | 8,722   | 1,721  |
| rel. Standardabweichung [%]                      | 4,38                  | 10,03              | 9,24     | 10,06   | 9,32   |

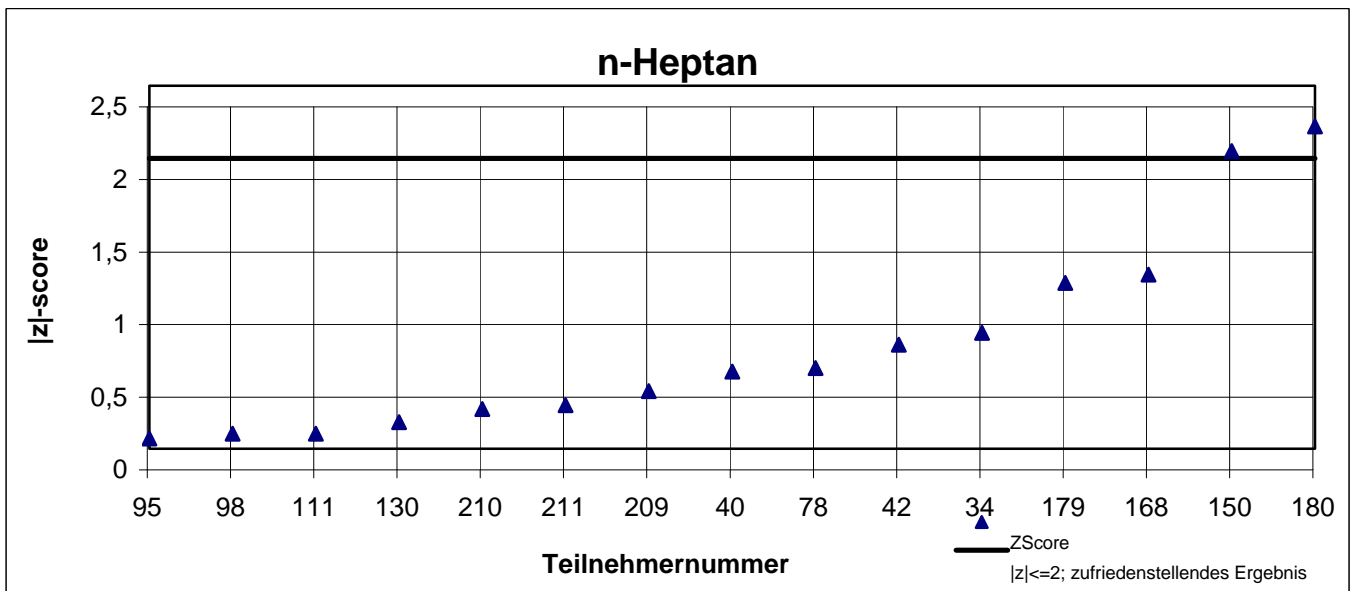
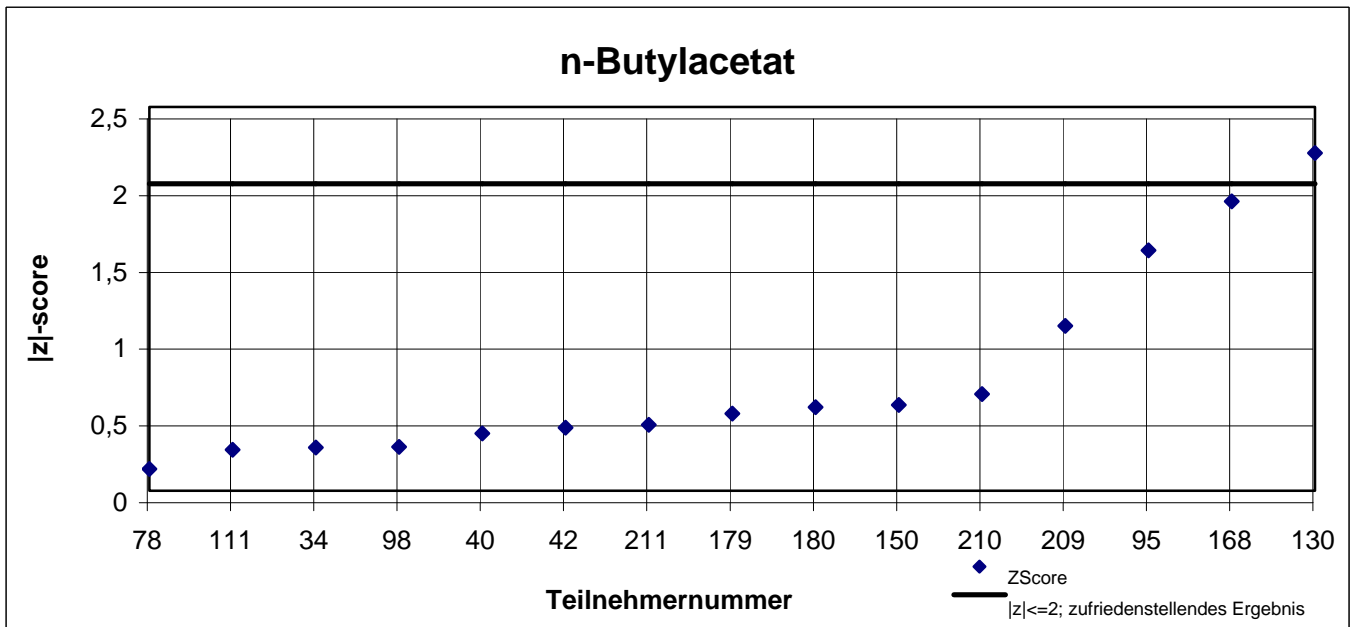
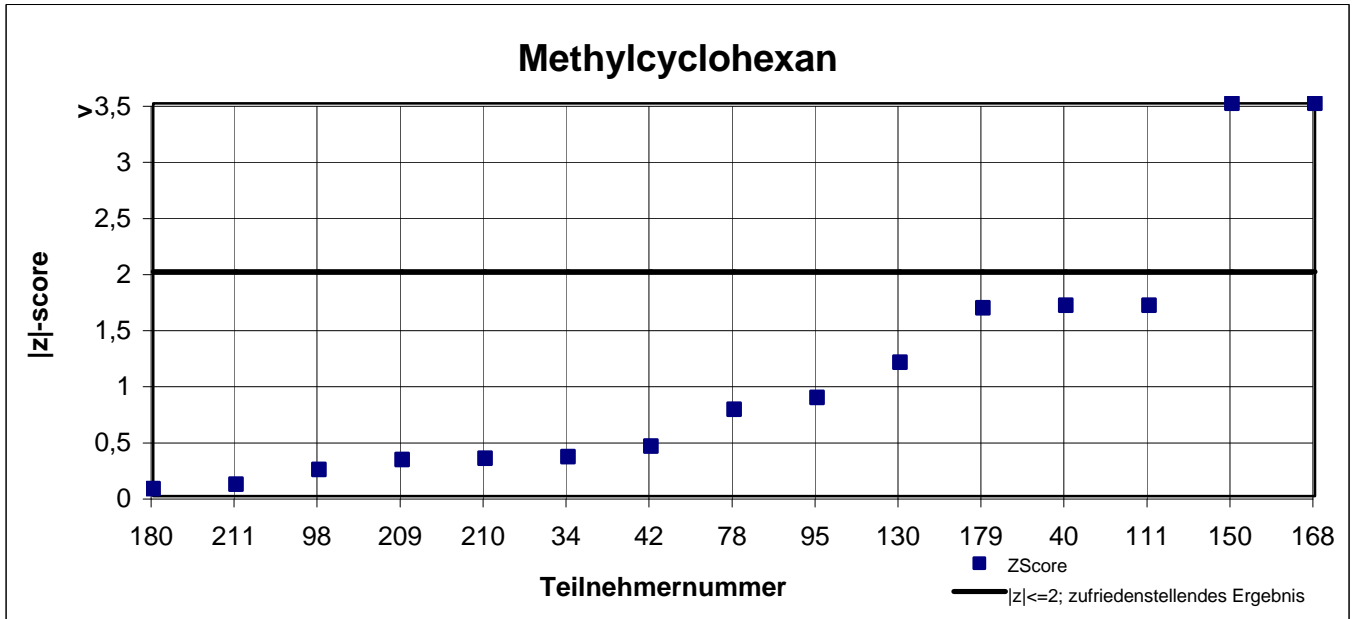
# Laborresultate Probe 1



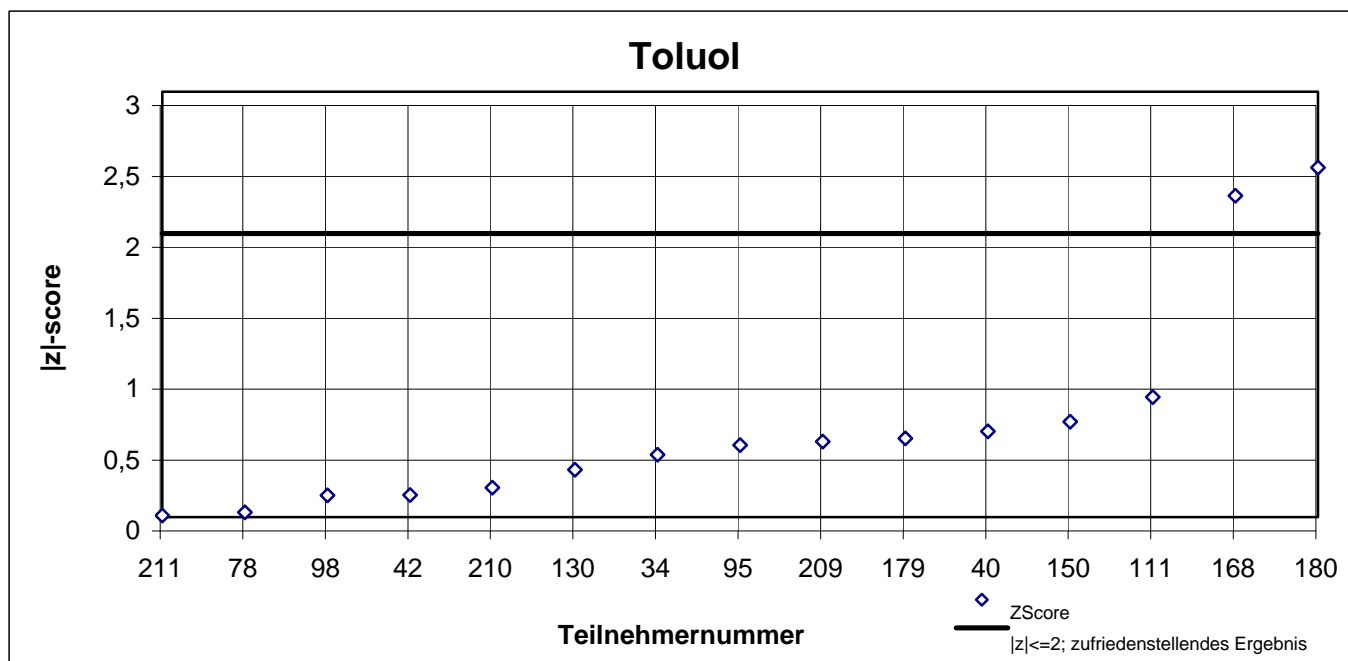
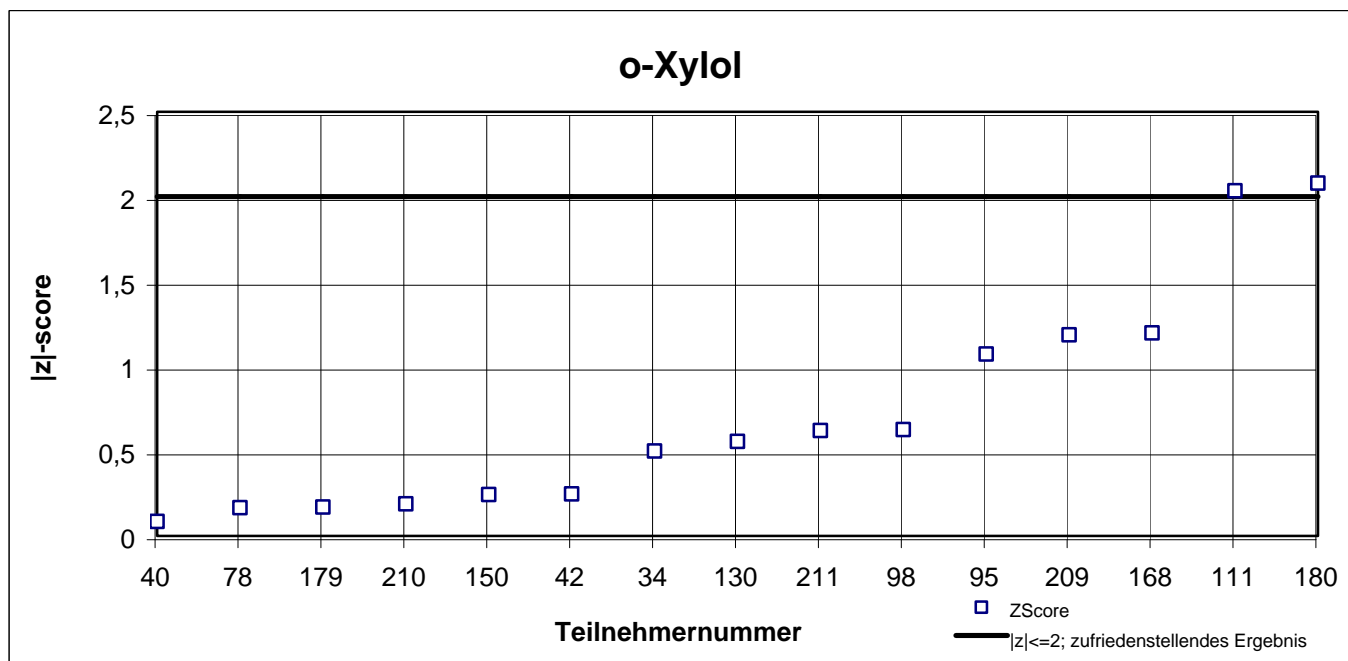
# Laborresultate Probe 1



# |z|-scores Probe 1



# |z|-scores Probe 1



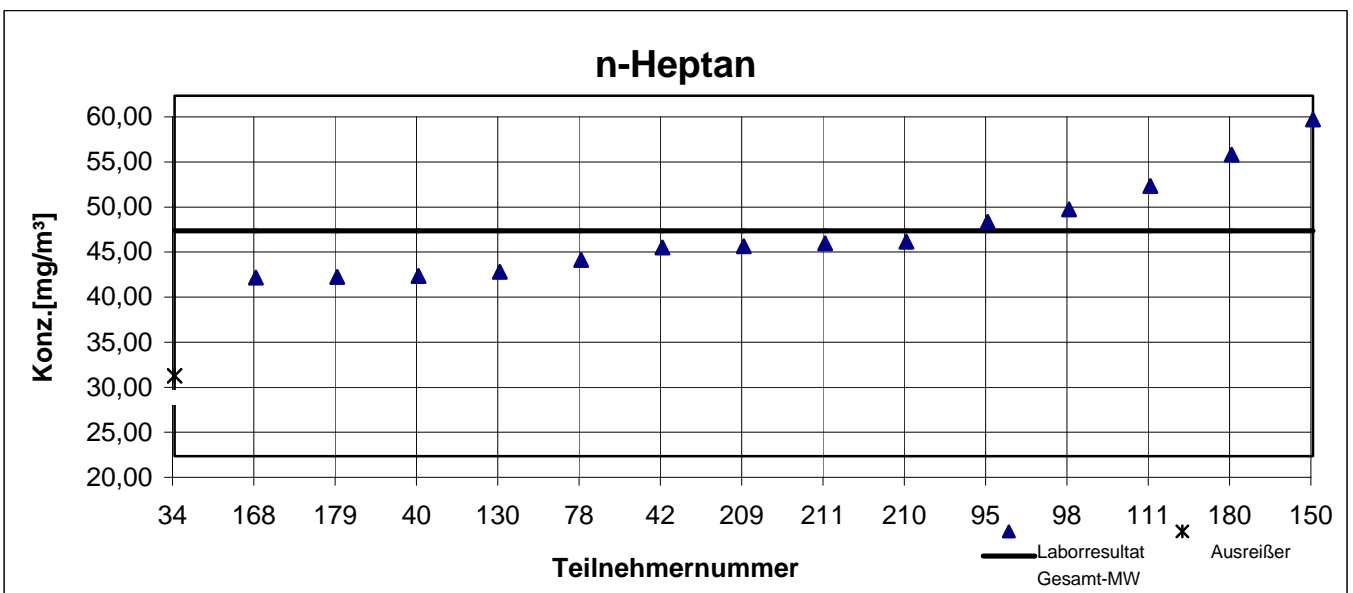
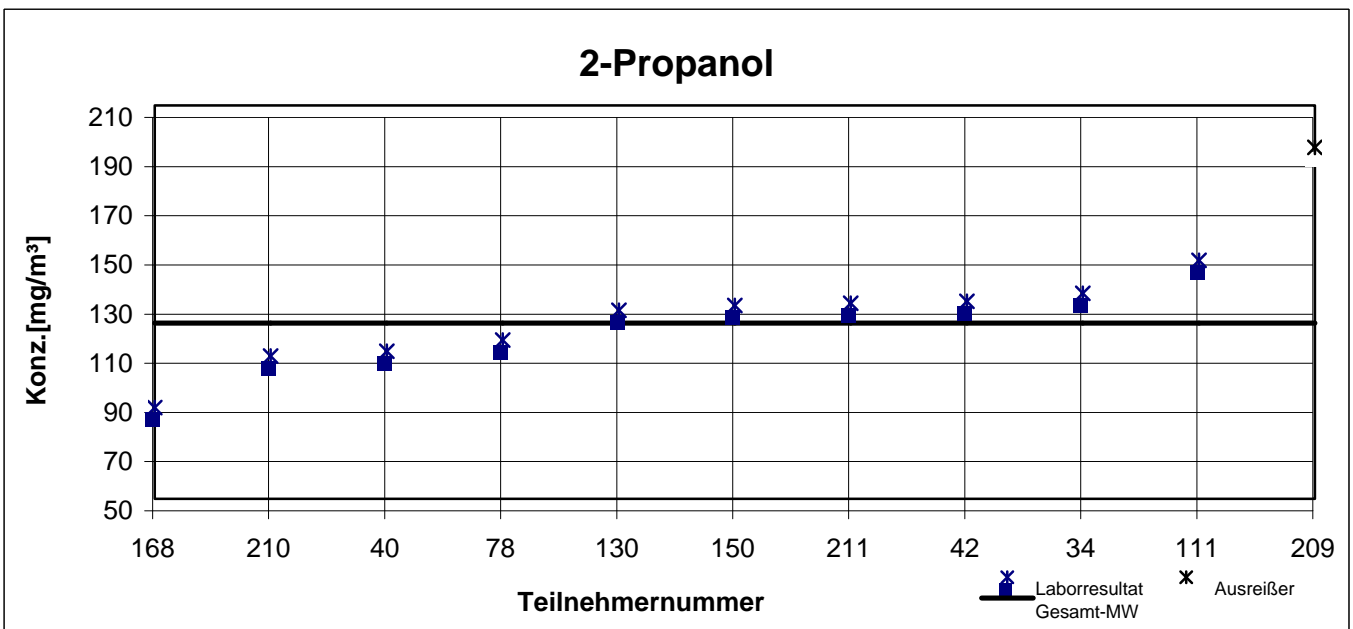
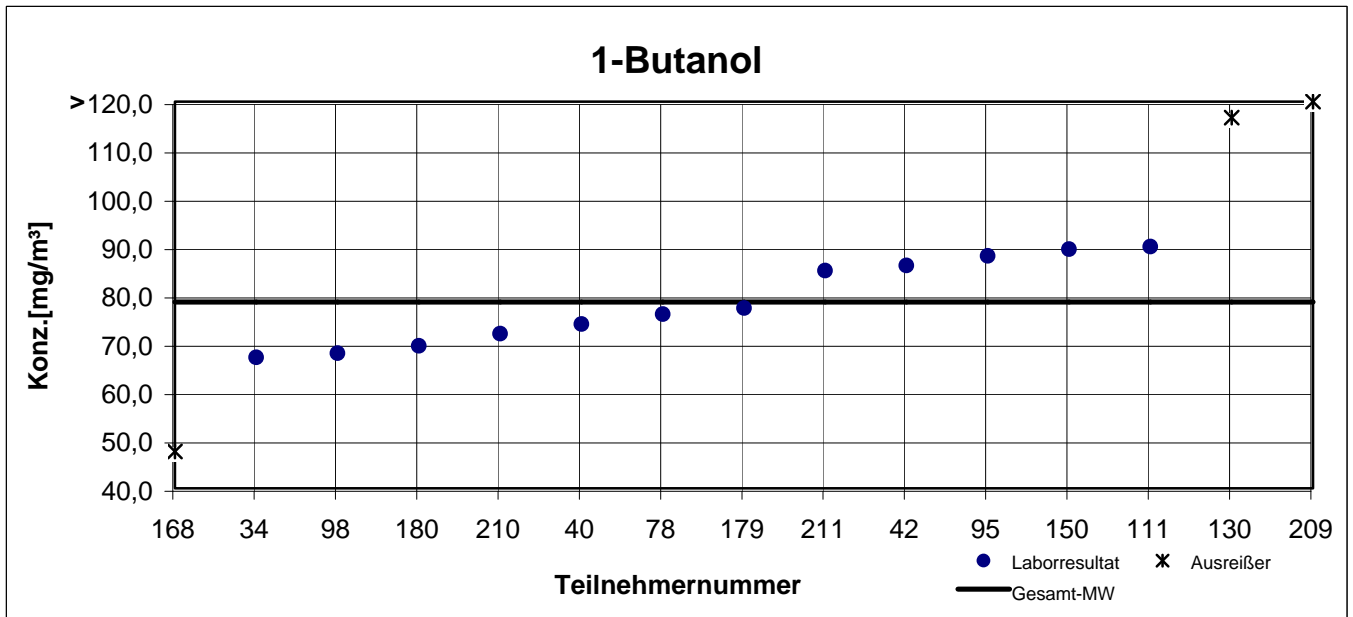
## Gesamtauswertung Probe 2

| Teilnehmer-<br>nummer | 1-Butanol                                  |            | 2-Propanol                                 |            | n-Heptan                                   |            | n-Propylacetat                             |            | Toluol                                     |            |
|-----------------------|--|------------|--|------------|--|------------|--|------------|--|------------|
|                       | Labor-<br>resultat<br>[mg/m <sup>3</sup> ] | z  - score | Labor-<br>resultat<br>[mg/m <sup>3</sup> ] | z  - score | Labor-<br>resultat<br>[mg/m <sup>3</sup> ] | z  - score | Labor-<br>resultat<br>[mg/m <sup>3</sup> ] | z  - score | Labor-<br>resultat<br>[mg/m <sup>3</sup> ] | z  - score |
| 34                    | 67,10                                      | 1,5        | 133,6                                      | 1,0        | 28,90                                      | 3,6        | 63,53                                      | 2,4        | 14,13                                      | 1,2        |
| 40                    | 74,00                                      | 0,6        | 110,0                                      | 0,9        | 40,00                                      | 1,1        | 89,00                                      | 0,6        | 16,00                                      | 0,0        |
| 42                    | 86,10                                      | 1,0        | 130,3                                      | 0,7        | 43,16                                      | 0,4        | 84,04                                      | 0,0        | 16,61                                      | 0,4        |
| 78                    | 76,05                                      | 0,3        | 114,5                                      | 0,6        | 41,78                                      | 0,7        | 81,94                                      | 0,2        | 16,04                                      | 0,0        |
| 95                    | 88,08                                      | 1,2        | k.A.                                       | k.A.       | 46,02                                      | 0,2        | 93,78                                      | 1,2        | 17,31                                      | 0,8        |
| 98                    | 67,92                                      | 1,4        | k.A.                                       | k.A.       | 47,39                                      | 0,5        | k.A.                                       | k.A.       | 16,59                                      | 0,4        |
| 111                   | 90,00                                      | 1,5        | 147,0                                      | 2,1        | 50,00                                      | 1,1        | 100,0                                      | 1,9        | 16,00                                      | 0,0        |
| 130                   | 116,7                                      | 4,9        | 126,6                                      | 0,4        | 40,47                                      | 1,0        | 93,27                                      | 1,1        | 13,97                                      | 1,3        |
| 150                   | 89,47                                      | 1,4        | 128,7                                      | 0,6        | 57,37                                      | 2,7        | 96,32                                      | 1,5        | 18,77                                      | 1,7        |
| 168                   | 47,62                                      | 3,9        | 87,1                                       | 2,8        | 39,84                                      | 1,1        | 70,11                                      | 1,6        | 12,39                                      | 2,2        |
| 179                   | 77,30                                      | 0,2        | k.A.                                       | k.A.       | 39,90                                      | 1,1        | 77,00                                      | 0,8        | 15,35                                      | 0,4        |
| 180                   | 69,50                                      | 1,2        | k.A.                                       | k.A.       | 53,47                                      | 1,9        | 81,57                                      | 0,3        | 19,40                                      | 2,1        |
| 209                   | 154,8                                      | 9,7        | 192,9                                      | 5,9        | 43,30                                      | 0,4        | 83,73                                      | 0,0        | 15,28                                      | 0,4        |
| 210                   | 72,00                                      | 0,8        | 108,0                                      | 1,1        | 43,80                                      | 0,3        | 76,50                                      | 0,9        | 15,90                                      | 0,1        |
| 211                   | 85,01                                      | 0,8        | 129,6                                      | 0,7        | 43,61                                      | 0,3        | 84,59                                      | 0,1        | 16,00                                      | 0,0        |

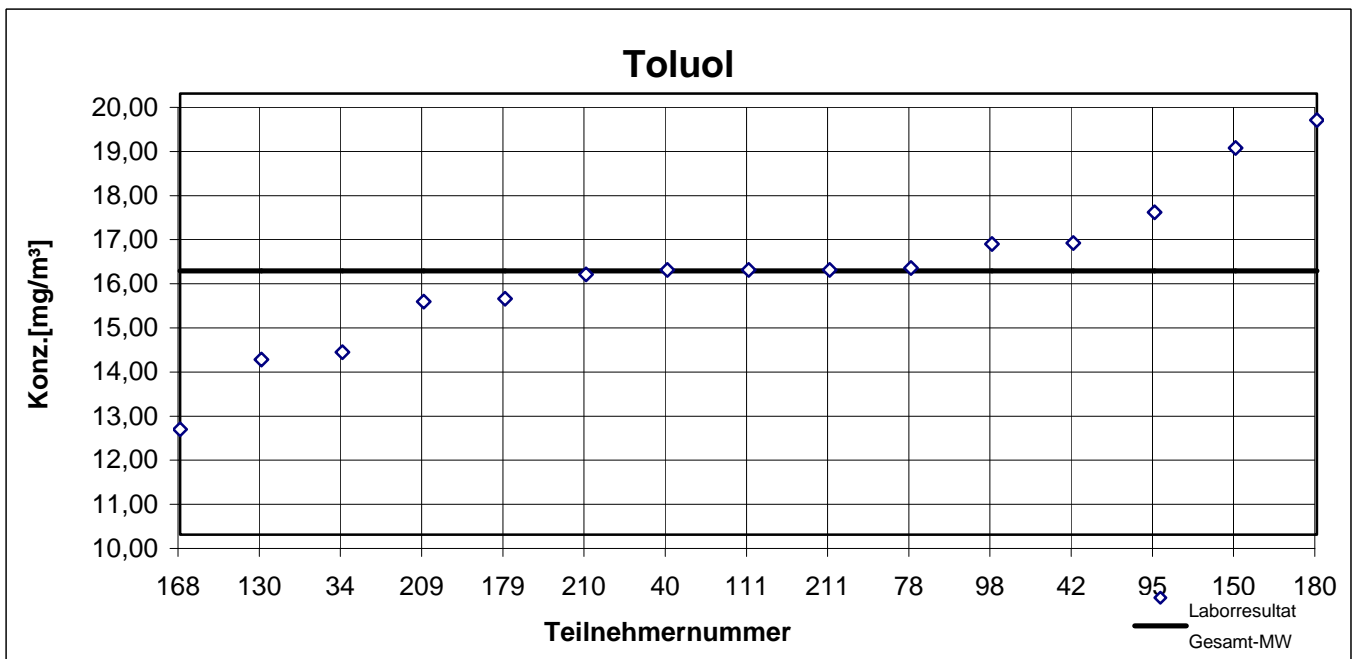
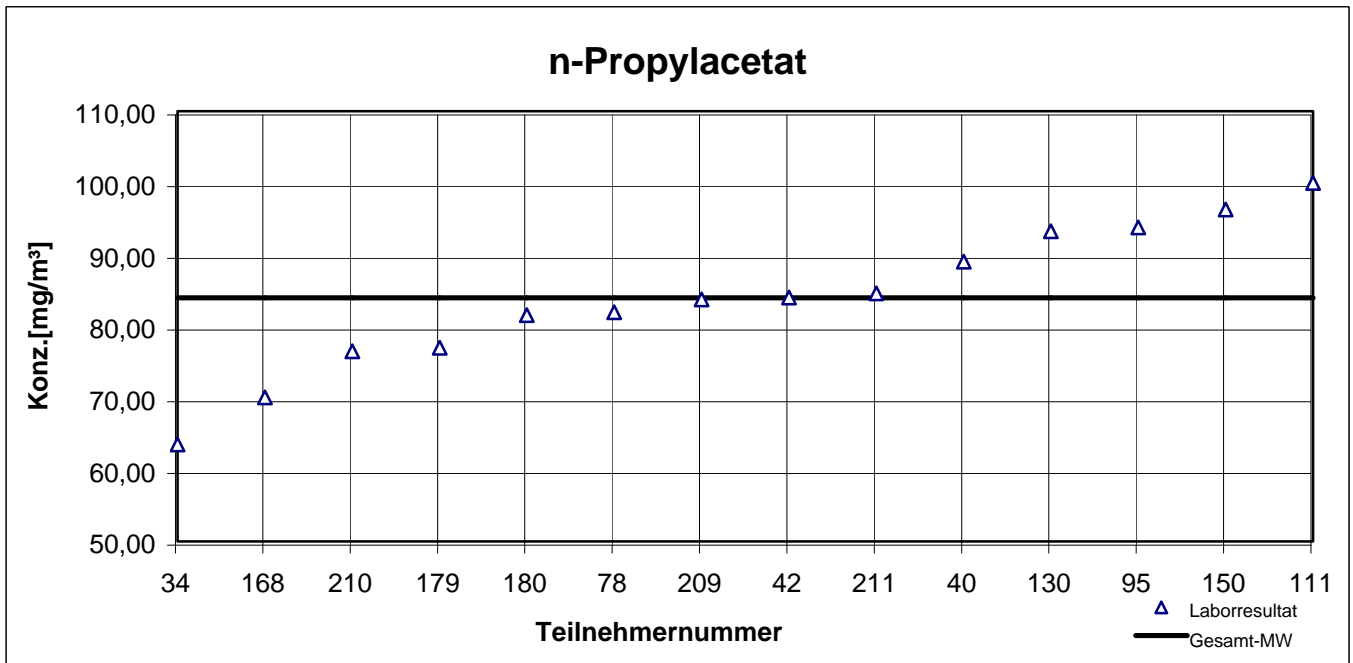
Die mit  gekennzeichneten Felder sind Ausreißer!

|  | 1-Butanol | 2-Propanol | n-Heptan | n-Propyl-<br>acetat | Toluol |
|--|-----------|------------|----------|---------------------|--------|
| Gesamtmittelwert $c_k$<br>[mg / m <sup>3</sup> ] | 78,54     | 121,5      | 45,01    | 83,96               | 15,98  |
| Standardabweichung $S_k$<br>[mg/m <sup>3</sup> ] | 8,725     | 16,88      | 5,370    | 10,16               | 1,758  |
| rel. Standardabweichung [%]                      | 11,11     | 13,89      | 11,93    | 12,10               | 11,00  |

## Laborresultate Probe 2

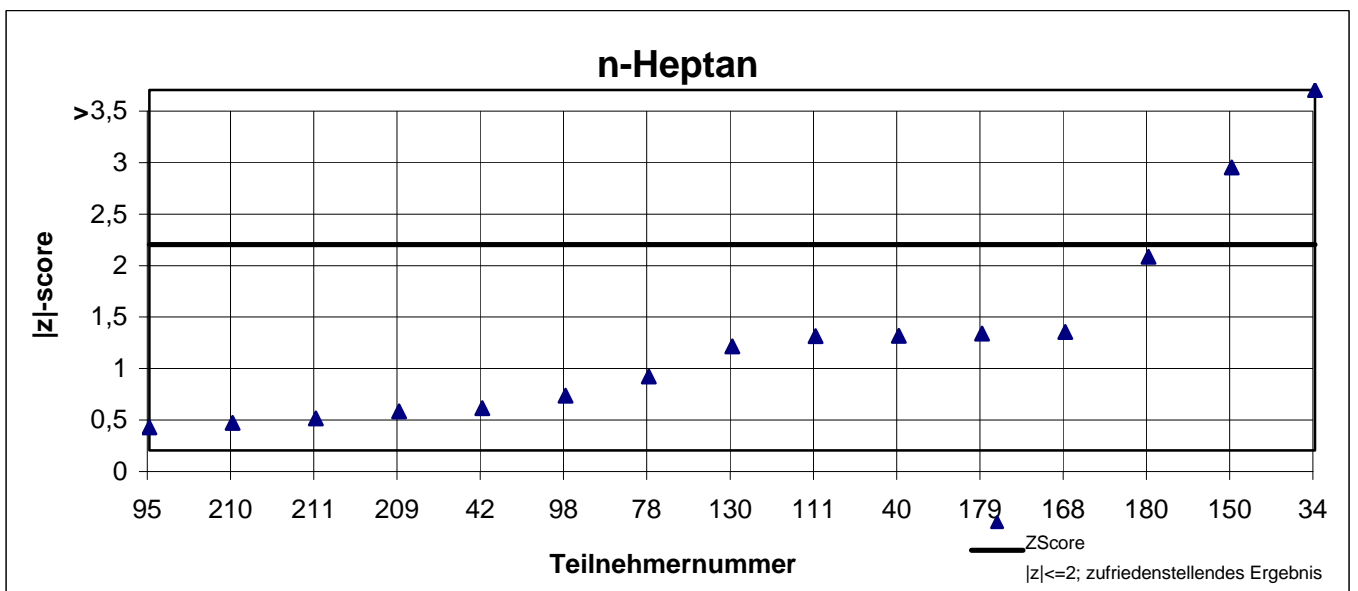
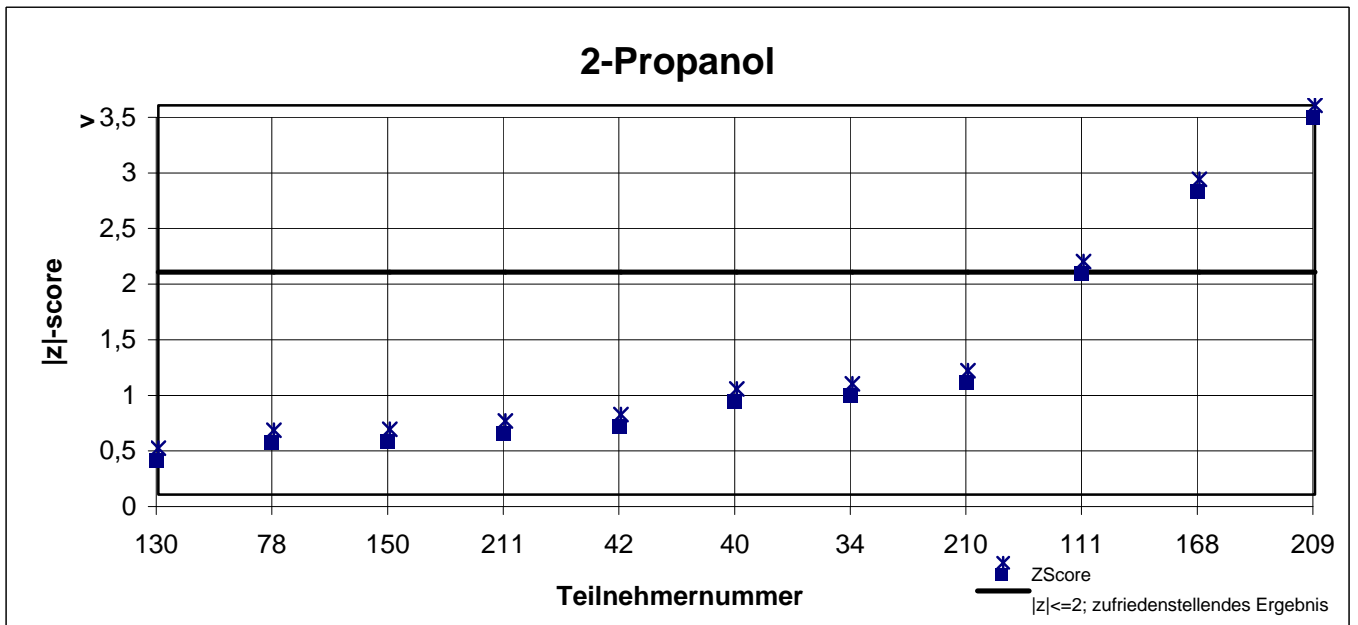
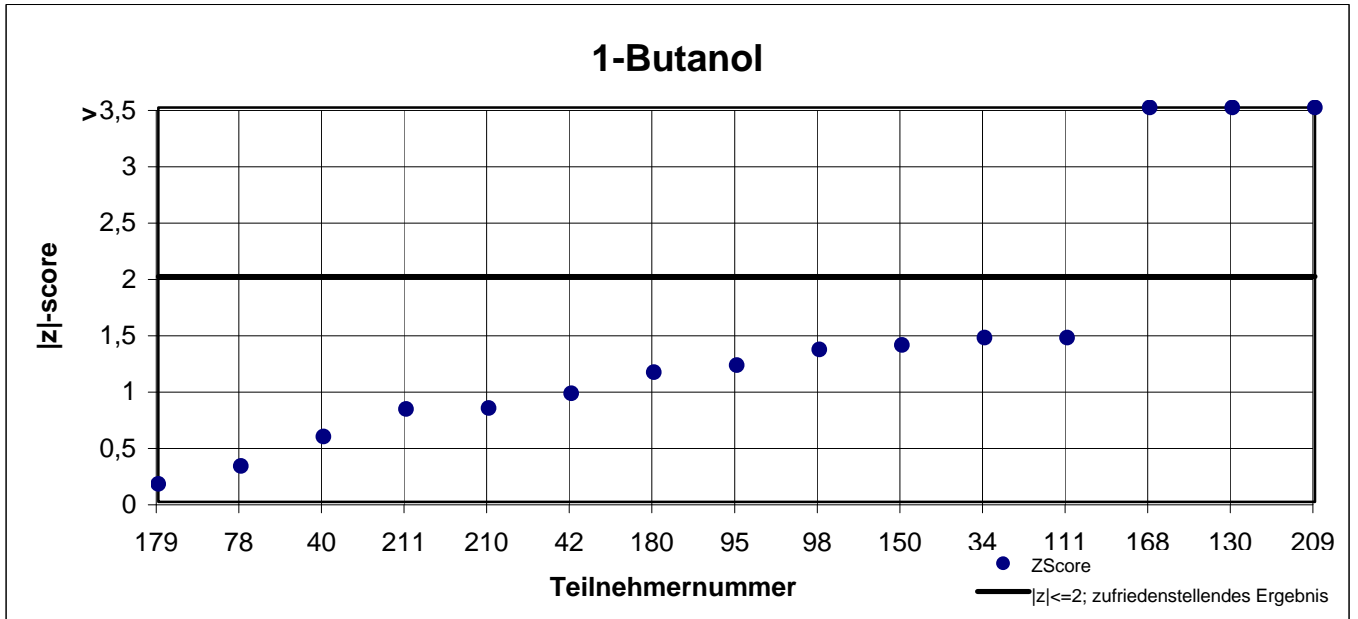


## Laborresultate Probe 2

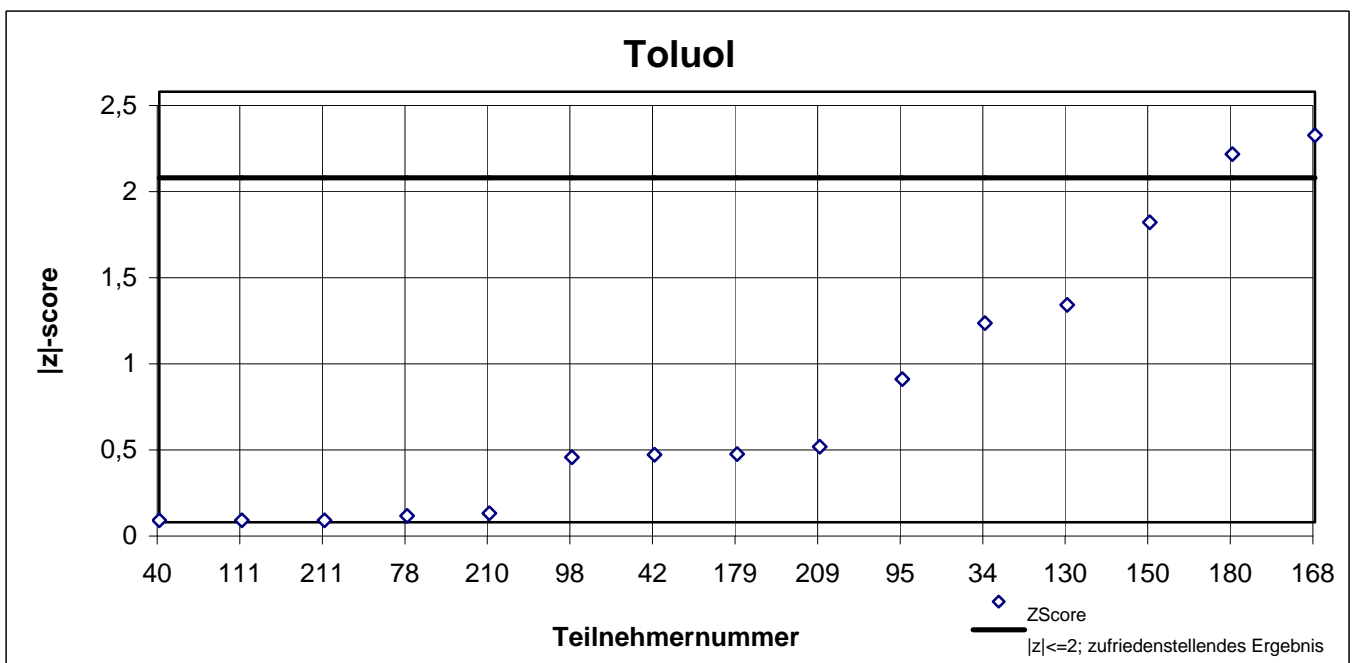
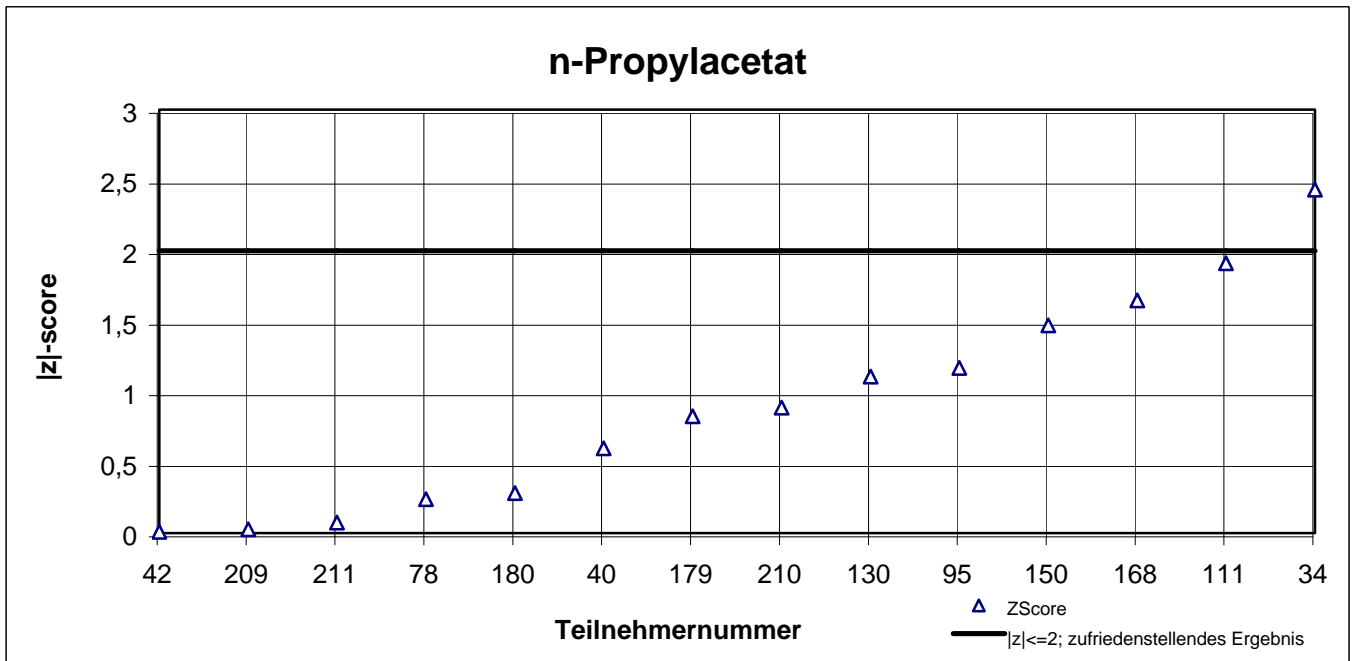




## |z|-scores Probe 2



## |z|-scores Probe 2



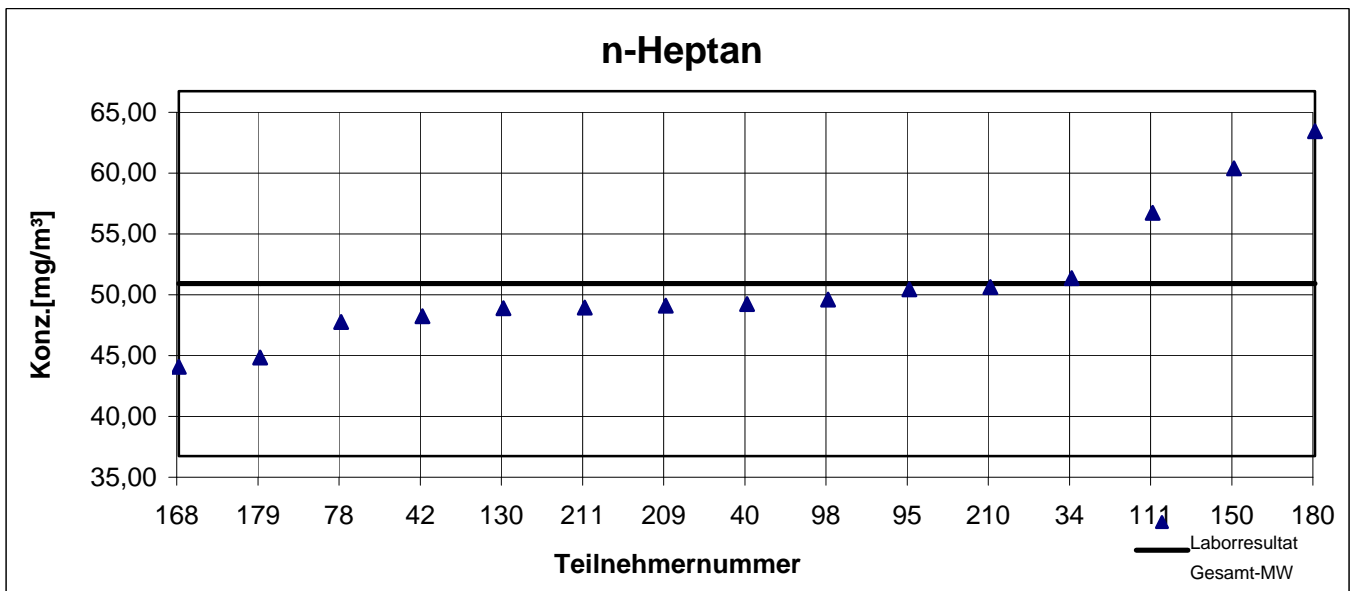
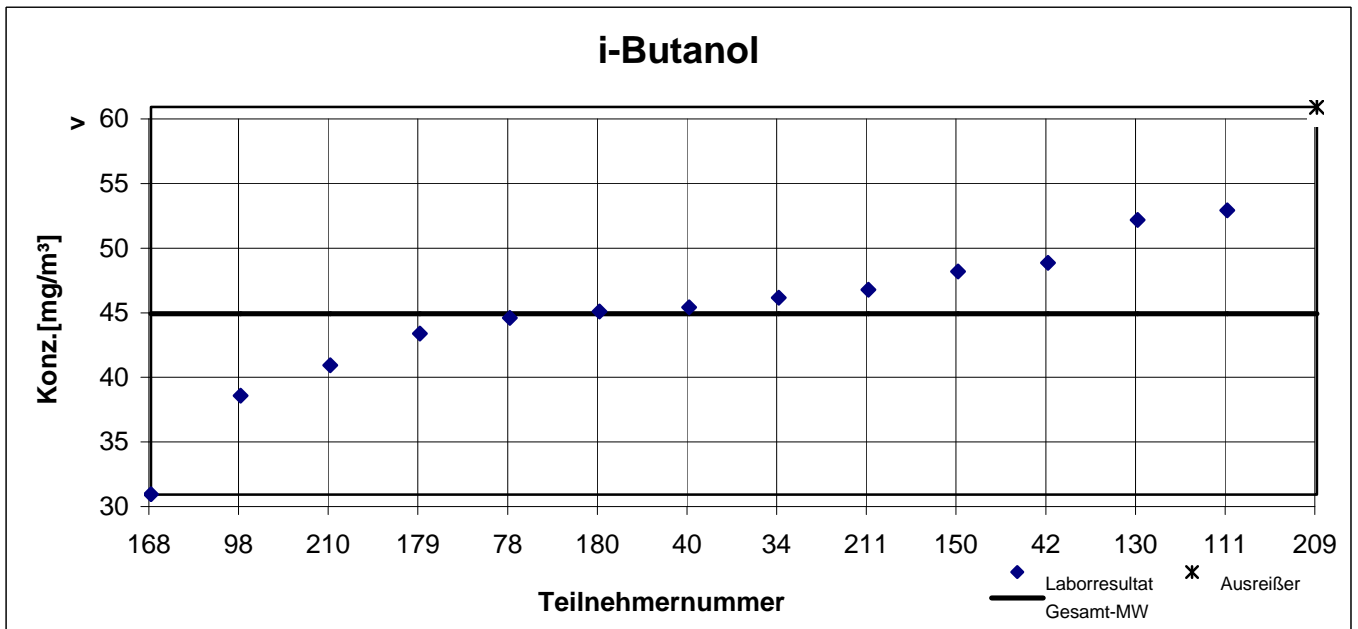
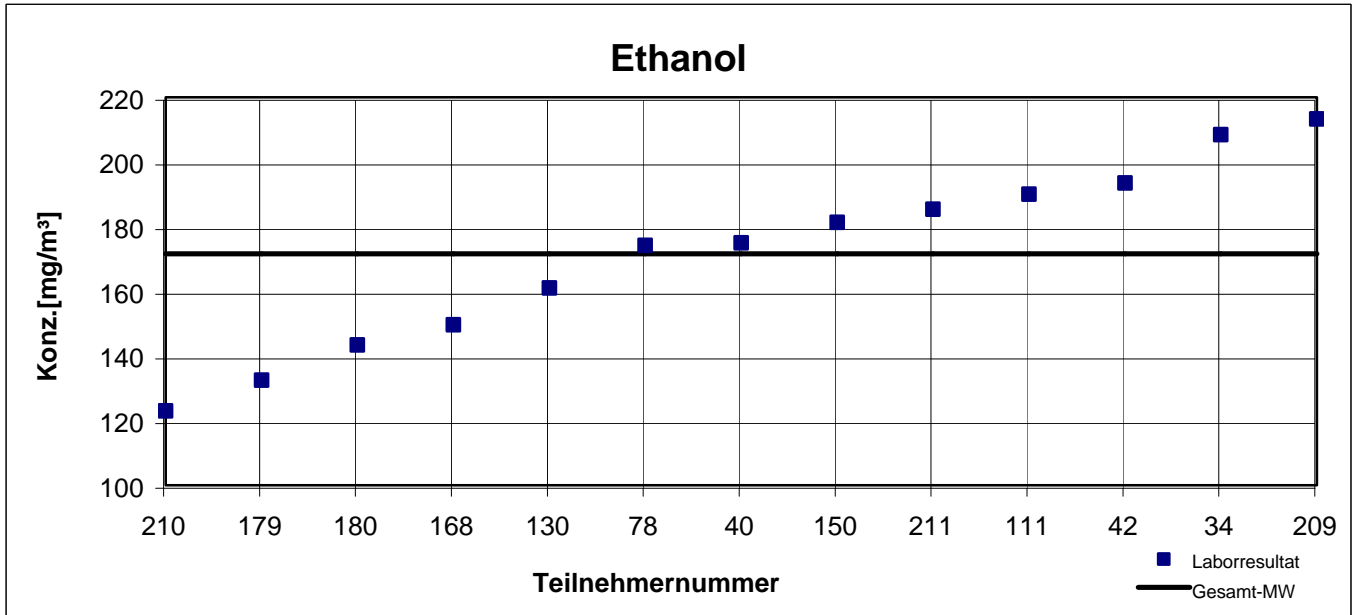
## Gesamtauswertung Probe 3

| Teilnehmer-<br>nummer | Ethanol                                    |            | i-Butanol                                  |            | n-Heptan                                   |            | n-Oktan                                    |            | Toluol                                     |            |
|-----------------------|--|------------|--|------------|--|------------|--|------------|--|------------|
|                       | Labor-<br>resultat<br>[mg/m <sup>3</sup> ] | z  - score | Labor-<br>resultat<br>[mg/m <sup>3</sup> ] | z  - score | Labor-<br>resultat<br>[mg/m <sup>3</sup> ] | z  - score | Labor-<br>resultat<br>[mg/m <sup>3</sup> ] | z  - score | Labor-<br>resultat<br>[mg/m <sup>3</sup> ] | z  - score |
| 34                    | 208,4                                      | 2,1        | 45,23                                      | 0,3        | 49,63                                      | 0,1        | 43,80                                      | 2,5        | 16,73                                      | 1,1        |
| 40                    | 175,0                                      | 0,2        | 44,50                                      | 0,1        | 47,50                                      | 0,3        | 58,00                                      | 0,0        | 20,00                                      | 0,6        |
| 42                    | 193,5                                      | 1,3        | 47,93                                      | 0,9        | 46,49                                      | 0,5        | 58,92                                      | 0,2        | 19,19                                      | 0,2        |
| 78                    | 174,1                                      | 0,1        | 43,67                                      | 0,1        | 46,02                                      | 0,6        | 57,56                                      | 0,1        | 18,96                                      | 0,1        |
| 95                    | k.A.                                       | k.A.       | k.A.                                       | k.A.       | 48,72                                      | 0,1        | 65,70                                      | 1,4        | 20,91                                      | 1,1        |
| 98                    | k.A.                                       | k.A.       | 37,66                                      | 1,4        | 47,87                                      | 0,3        | 57,14                                      | 0,2        | 18,59                                      | 0,1        |
| 111                   | 190,0                                      | 1,1        | 52,00                                      | 1,8        | 55,00                                      | 1,2        | 62,00                                      | 0,7        | 18,00                                      | 0,4        |
| 130                   | 161,0                                      | 0,6        | 51,27                                      | 1,7        | 47,17                                      | 0,4        | 58,57                                      | 0,1        | 18,07                                      | 0,4        |
| 150                   | 181,3                                      | 0,6        | 47,27                                      | 0,7        | 58,65                                      | 1,9        | 61,17                                      | 0,6        | 20,24                                      | 0,8        |
| 168                   | 149,7                                      | 1,3        | 30,03                                      | 3,2        | 42,35                                      | 1,4        | 51,27                                      | 1,2        | 14,49                                      | 2,3        |
| 179                   | 132,5                                      | 2,3        | 42,45                                      | 0,4        | 43,10                                      | 1,2        | 54,80                                      | 0,6        | 17,70                                      | 0,6        |
| 180                   | 143,4                                      | 1,6        | 44,17                                      | 0,0        | 61,70                                      | 2,5        | 67,87                                      | 1,7        | 23,97                                      | 2,8        |
| 209                   | 213,3                                      | 2,4        | 80,10                                      | 8,2        | 47,36                                      | 0,4        | 56,59                                      | 0,3        | 17,80                                      | 0,5        |
| 210                   | 123,0                                      | 2,8        | 40,00                                      | 0,9        | 48,90                                      | 0,1        | 59,30                                      | 0,2        | 18,70                                      | 0,0        |
| 211                   | 185,4                                      | 0,8        | 45,85                                      | 0,4        | 47,20                                      | 0,4        | 57,30                                      | 0,1        | 18,44                                      | 0,2        |

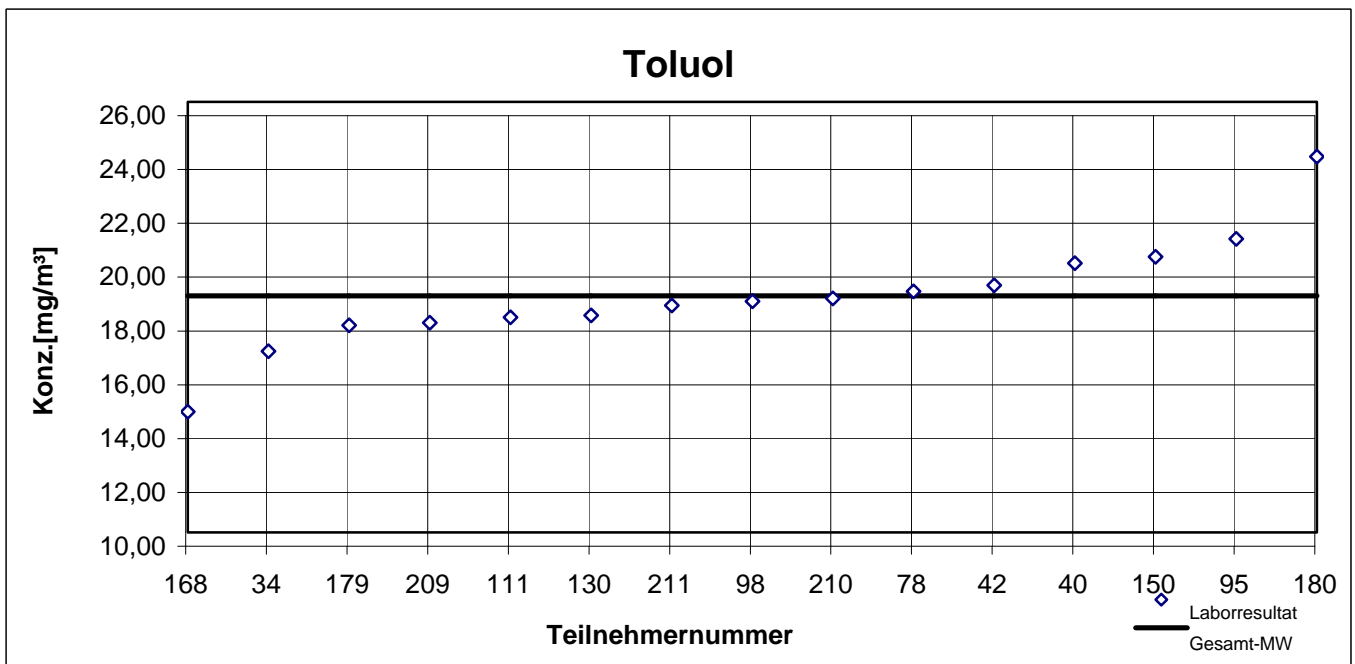
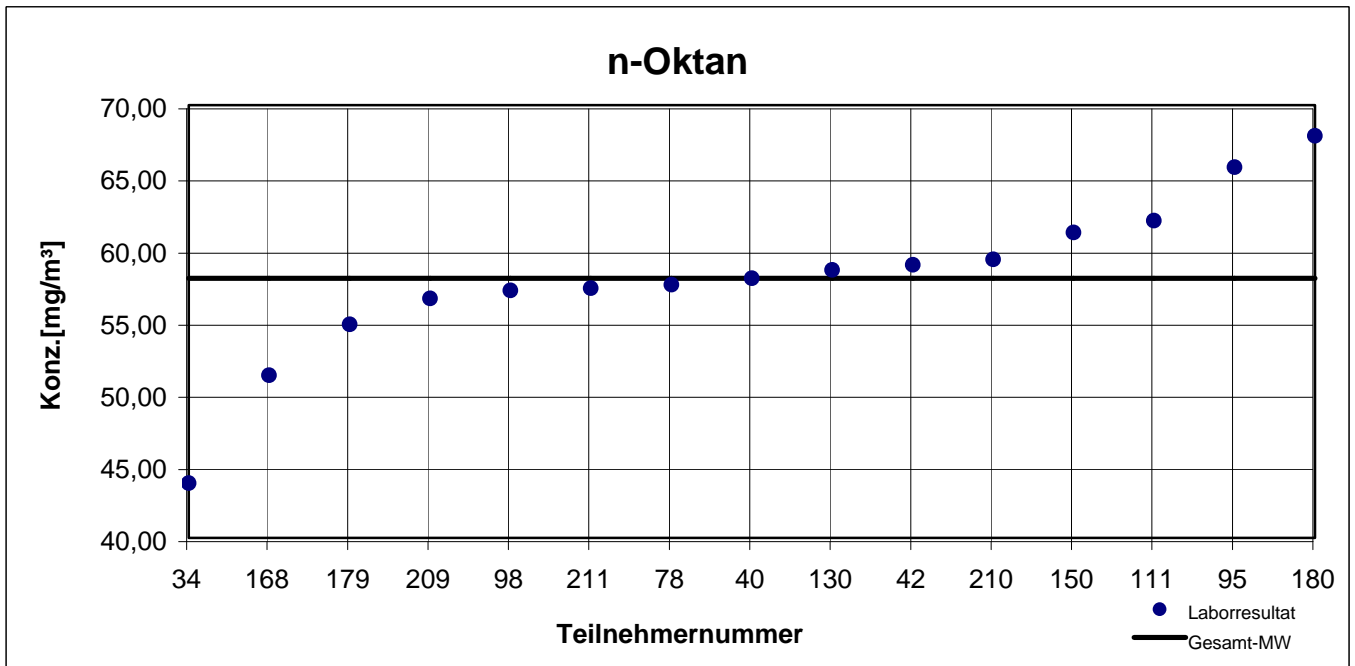
Die mit  gekennzeichneten Felder sind Ausreißer!

|  | Ethanol | i-Butanol | n-Heptan | n-Oktan | Toluol |
|--|---------|-----------|----------|---------|--------|
| Gesamtmittelwert $c_k$<br>[mg / m <sup>3</sup> ] | 171,6   | 44,00     | 49,18    | 58,00   | 18,79  |
| Standardabweichung $S_k$<br>[mg/m <sup>3</sup> ] | 28,14   | 5,789     | 5,327    | 5,645   | 2,092  |
| rel. Standardabweichung [%]                      | 16,40   | 13,16     | 10,83    | 9,73    | 11,14  |

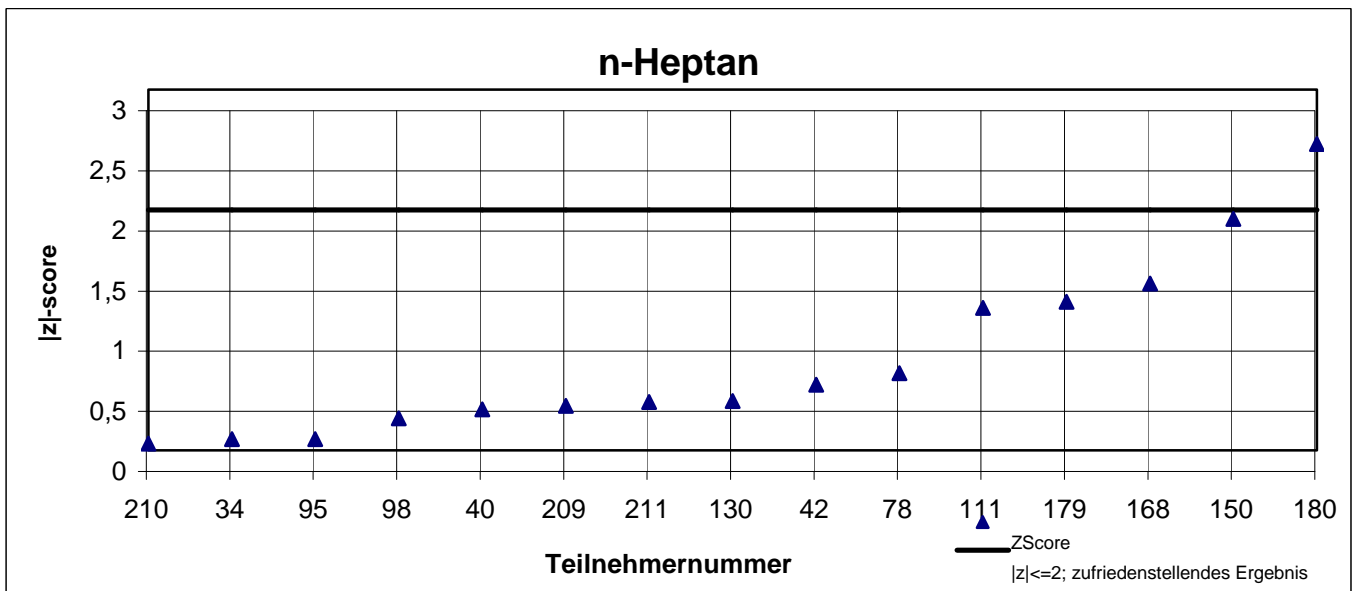
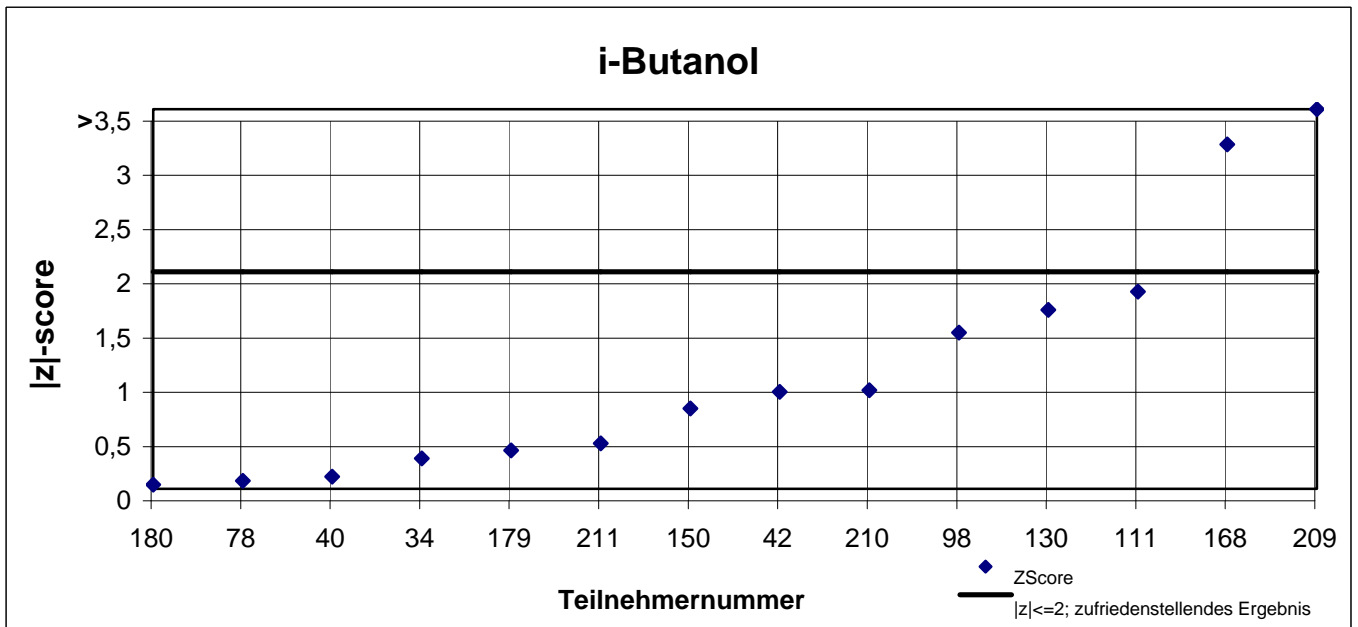
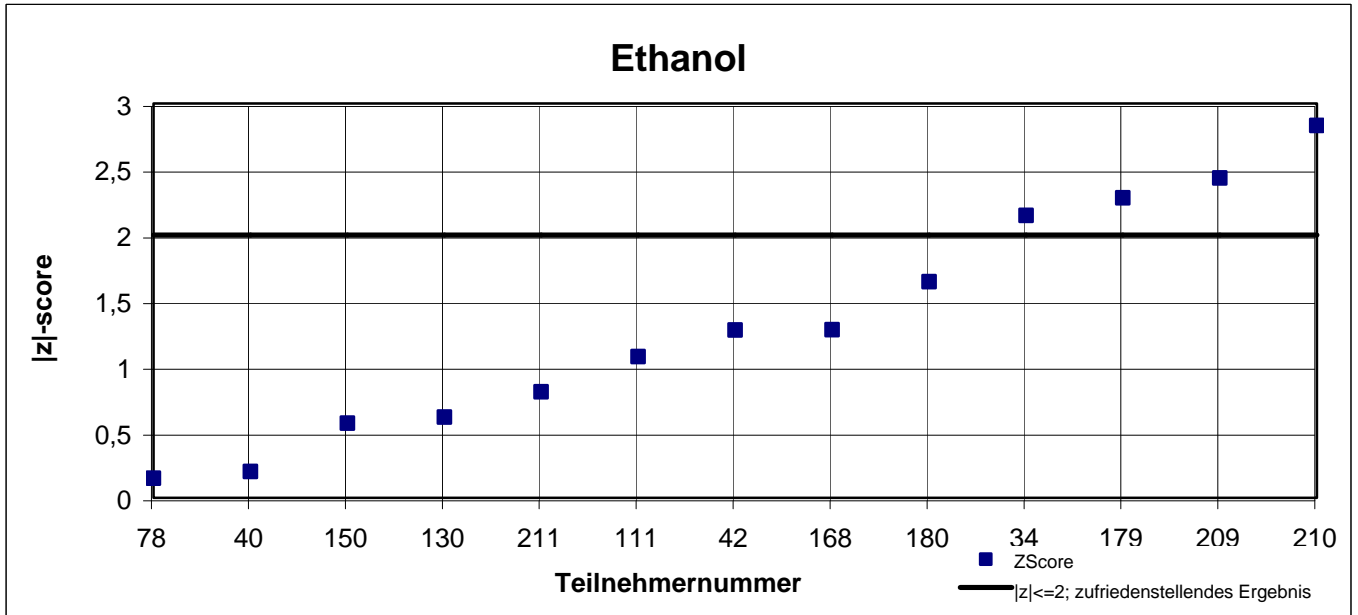
# Laborresultate Probe 3



# Laborresultate Probe 3



# |z|-scores Probe 3



# |z|-scores Probe 3

